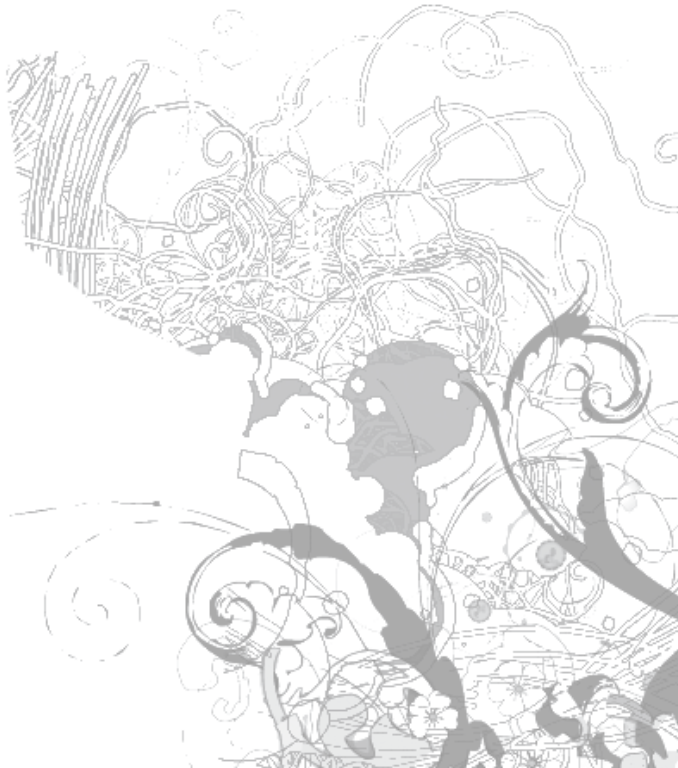


WE³



We3

THE YEARS TEACH MUCH WHICH THE DAYS NEVER KNOW.

- SENECA SAYING

The moon is the keeper of time. Its circuits mark our hours and our days, its cycles, our weeks and months. The waning and waxing of the moon is marked by the tides, by our cycles and our moods. This rhythm is what gets us out into the world and returns us to our homes. The blanket of light that is shed by the moon is a gentle lullaby that we can rely on. The sway is a comfort.

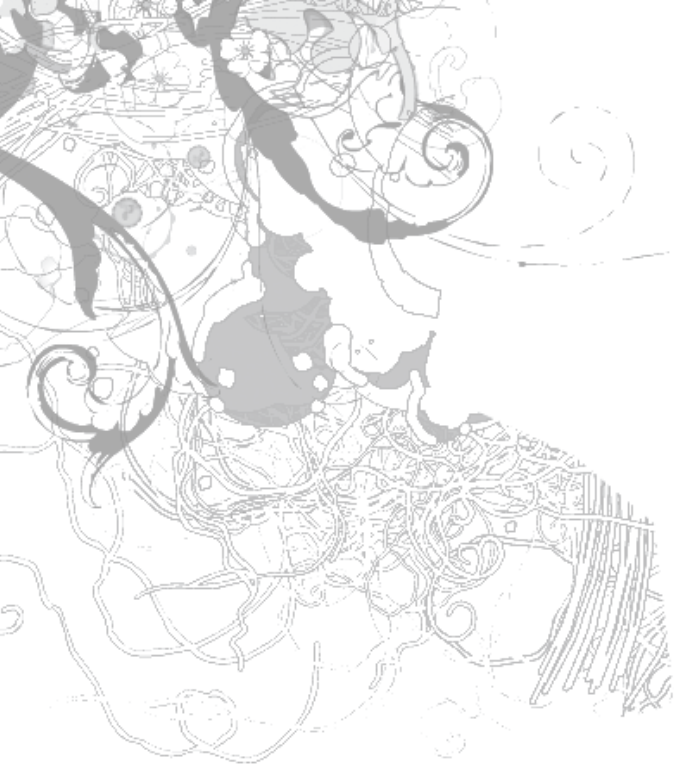
The ability of small things to affect larger ones is potent. As the moon orbits the earth's

oceans rise and fall. The tension between opposing forces is dynamic and always full of possibility.

Though the future is hidden we look to the moon for its constancy.

We3 presents its 5th collection with this need for reliability in mind. Introducing new fabrics, but maintaining our signature style and attention to detail - You can rely on We3 to deliver the best in sustainable style.





www.we3.ca

WE³

www.twiggandhottie.com





gathered jewelneck muscle

FW10-E03-BF

available in:

brown

teal

black

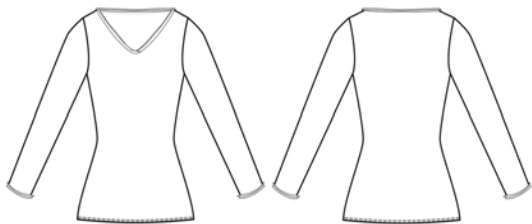
modal

custom red

viscose from bamboo film

XS, S, M, L

WE³



v-neck with long sleeves

FW10-E01-BF

available in:

brown

teal

black

modal

custom red

viscose from bamboo film

XS, S, M, L

WE³





low back with pleated shoulder

FW10-E07-BF

available in:

brown

teal

black

modal

custom red

viscose from bamboo film

XS, S, M, L

WE³



scoopneck 3/4 sleeve essential

FW10-E08-BF

available in:

brown

teal

black

modal

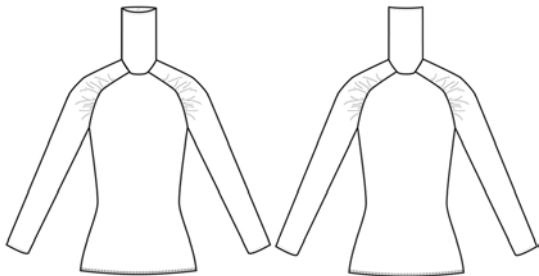
custom red

viscose from bamboo film

XS, S, M, L

WE³





raglan turtleneck with gather

FW10-E02-BF

available in:

brown

teal

black

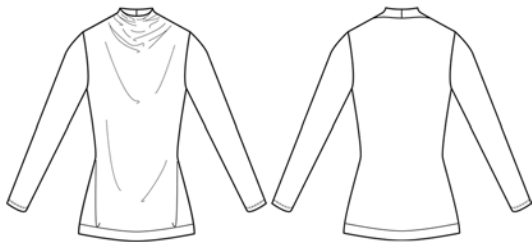
modal

custom red

viscose from bamboo film

XS, S, M, L

WE³



galactica top

FW10-C03-BF

available in:

brown

teal

black

modal

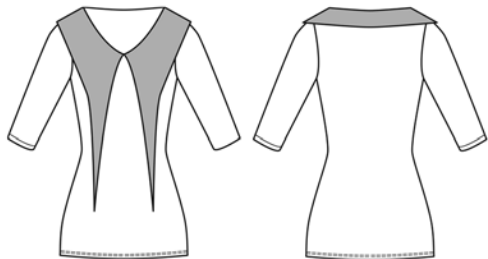
custom red

viscose from bamboo film

XS, S, M, L

WE³





harvest moon tunic

FW10-C01-BCJ

available in:

brown

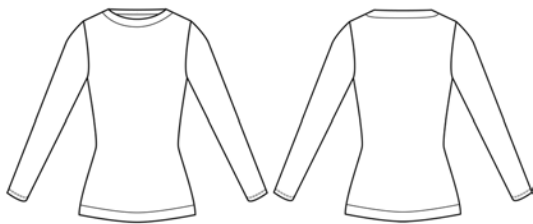
grey

black

XS, S, M, L

viscose from bamboo cotton jersey
& merino wool trim

WE³



longsleeve boatneck essential

FW10-E04-BCJ

available in:

brown

grey

teal

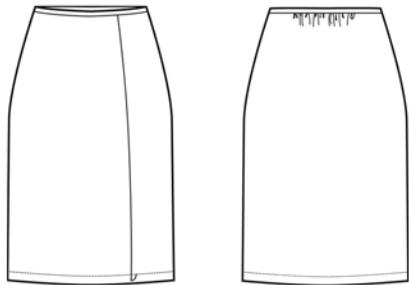
black

XS, S, M, L

viscose from bamboo cotton jersey

WE³





crescent moon skirt

FW10-C05-BCJ

available in:

brown

grey

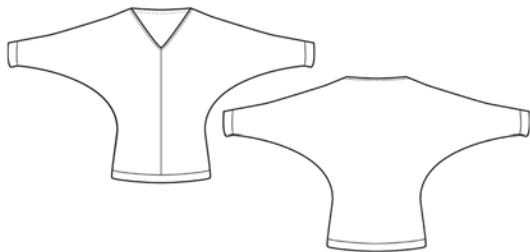
teal

black

XS, S, M, L

viscose from bamboo cotton jersey

WE³



v-neck kimono sleeve essential

FW10-E06-BCJ

available in:

brown

grey

teal

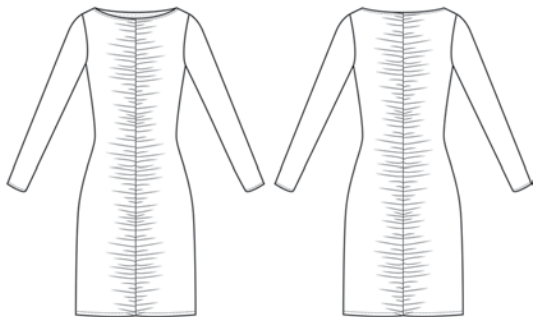
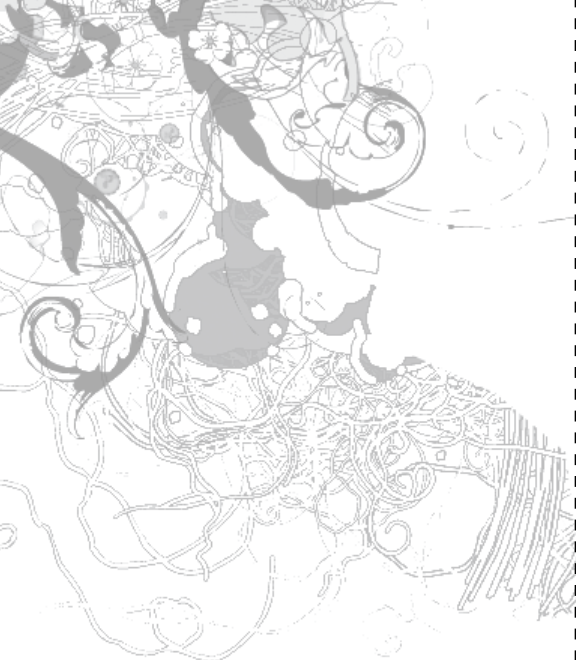
black

XS, S, M, L

viscose from bamboo cotton jersey

WE³





full moon dress

FW10-C06-BCJ

available in:

brown

grey

teal

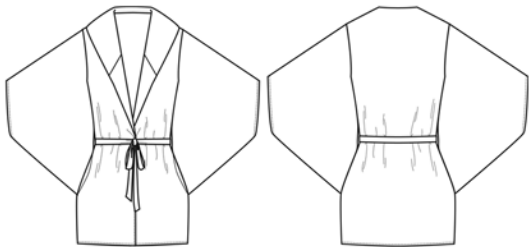
black

XS, S, M, L

viscose from bamboo cotton jersey

WE³





celestial wrap

FW10-C11-SR

available in:

brown

heather charcoal

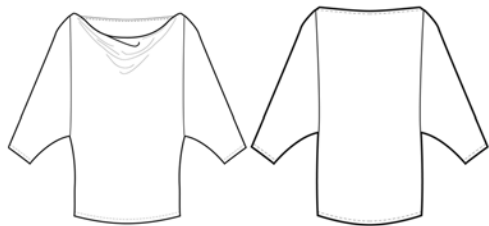
black

purple

XS, S, M, L

viscose from bamboo rib

WE³



solstice top

FW10-C02-SR

available in:

brown

heather charcoal

black

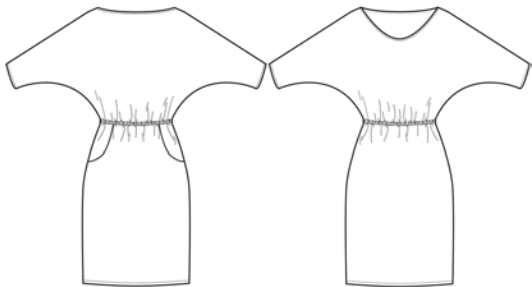
purple

XS, S, M, L

viscose from bamboo rib

WE³





equinox dress

FW10-C08-BI

available in:

brown

black

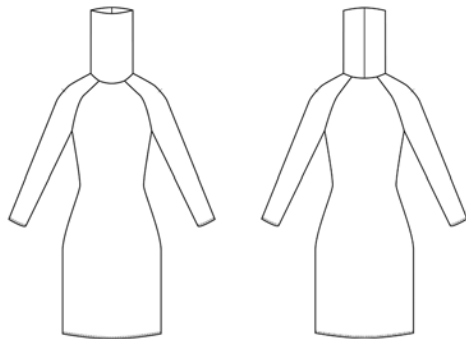
teal

red

XS, S, M, L

viscose from bamboo interlock

WE³



funnelneck dress

FW10-E05-BI

available in:

brown

black

teal

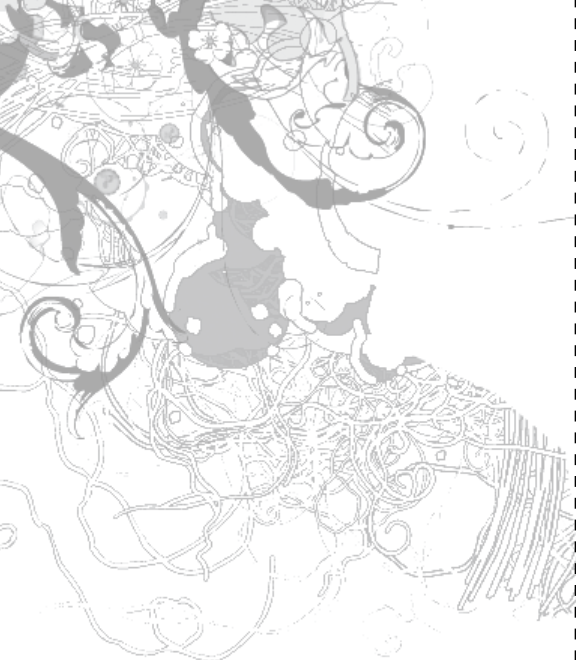
red

XS, S, M, L

viscose from bamboo interlock

WE³





new moon top

FW10-C09-BI

available in:

brown

black

teal

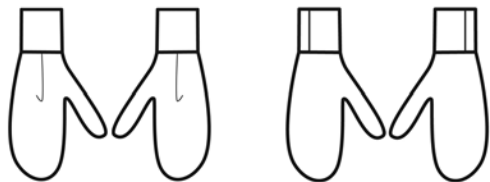
red

XS, S, M, L

viscose from bamboo interlock

WE³





man in the moon mittens

FW10-A02-MW

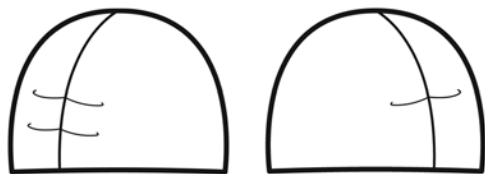
available in:

grey
chocolate
black

ONE SIZE

merino wool

WE³



eclipse hat

FW10-A01-MW

available in:

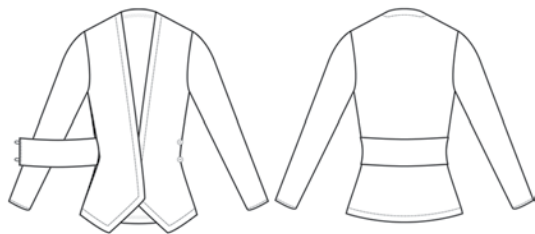
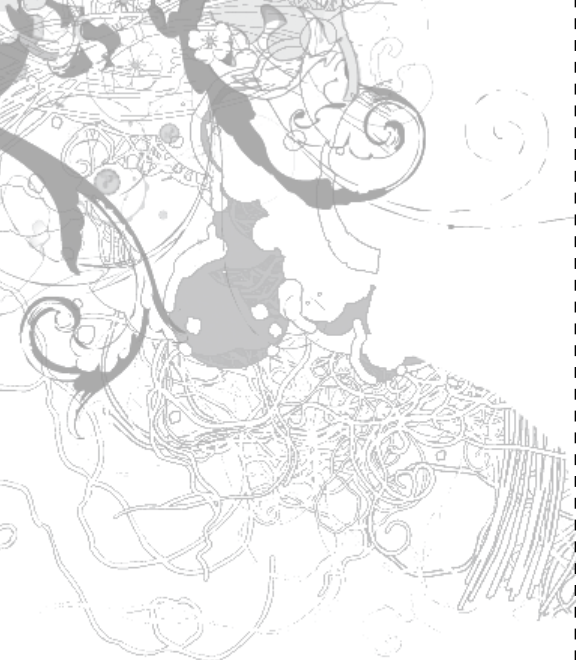
grey
chocolate
black

ONE SIZE

merino wool

WE³





luna cardigan

FW10-C13-MW

available in:

grey

chocolate

black

XS, S, M, L

merino wool

WE³

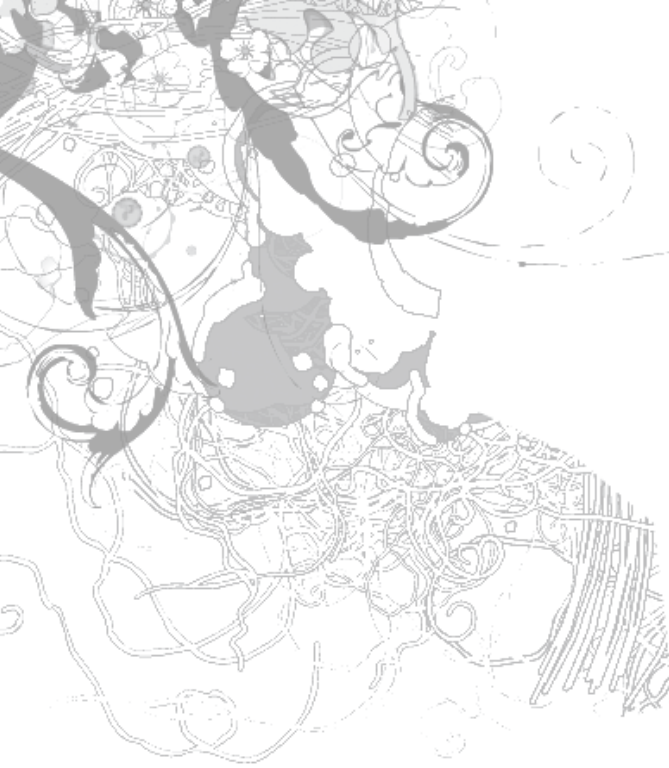


For more information and wholesale inquiries please contact Jessica Vaira either by e-mail at us3@we3.ca or by telephone at (604)879-8595.

Deadline for orders: Apr 1st
Delivery Window: Aug 15th - Oct 15th

Payment options:
Visa, MasterCard, AMEX, COD
In season re-orders may be possible.

Please call to inquire about stock levels and second run status.



We³

Photography:

Angela Fama

www.famaphotography.com

Graphics:

Rebecca Rolseth

rebeccable@gmail.com

Model:

Cecilia

Technical Flats:

Tyler Wilson



©2010 We3 All Rights Reserved